

**SPECIFICATIONS**

Current Rating: 1A AC,DC  
 Voltage Rating: 125V AC,DC  
 Temperature Range: -25°C ~ +85°C  
 Contact Resistance: 20mΩ Max.  
 Insulation Resistance: 100MΩ Min.  
 Withstanding Voltage: 500V AC/minute  
 Pin Material: Phosphor Bronze/Gold-plated  
 Solder Tabs: Brass/Gold-plated  
 Material: Nylon 6T OR 9T,UL94V-0  
 Color: Natural(Beige) OR (Black)

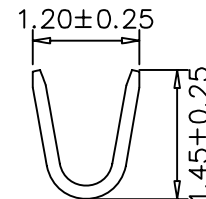
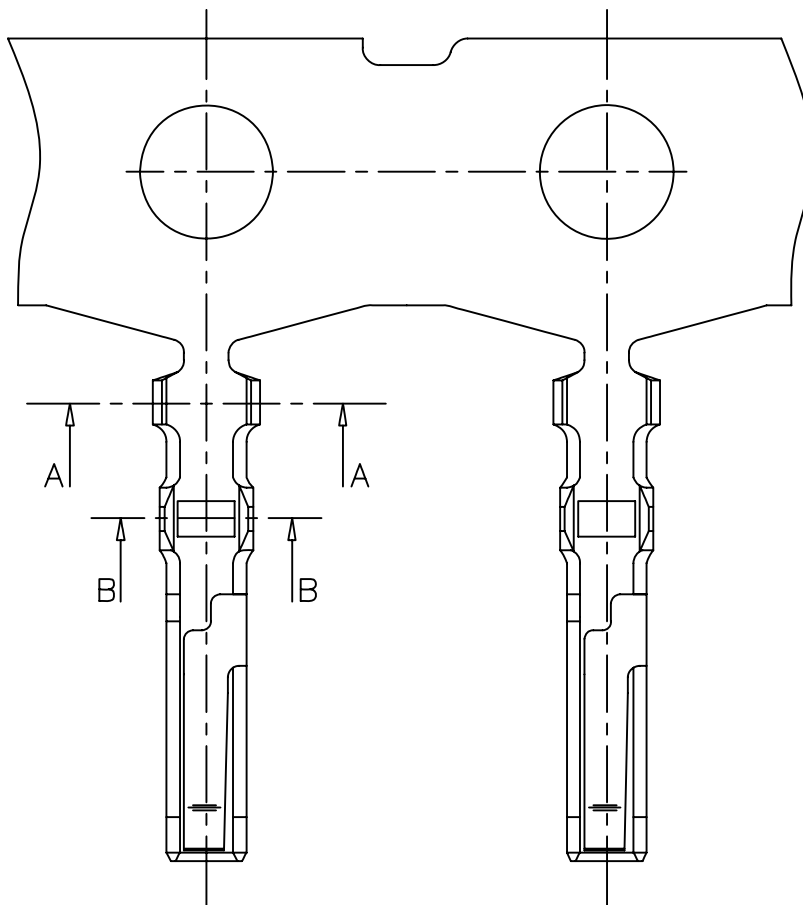
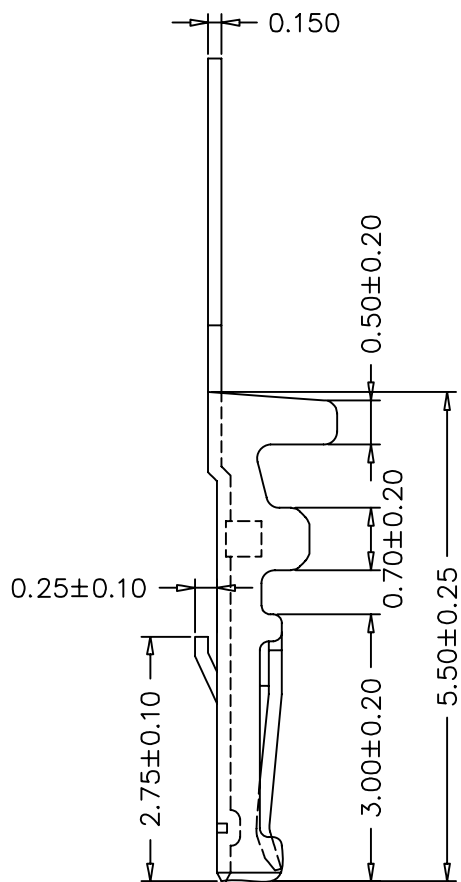
**Ordering Information & Dimensions**

PART NO.	Dimensions	
	A	B
02P	1.25	7.65
03P	2.50	8.90
04P	3.75	10.15
05P	5.00	11.40
06P	6.25	12.65
07P	7.50	13.90
08P	8.75	15.15
09P	10.00	16.40
10P	11.25	17.65
11P	12.50	18.90
12P	13.75	20.15
14P	16.25	22.65
15P	17.50	23.90
16P	18.75	25.15
20P	23.75	30.15

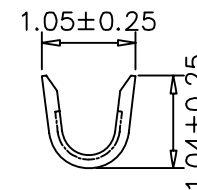


深圳市华宇创精密电子有限公司

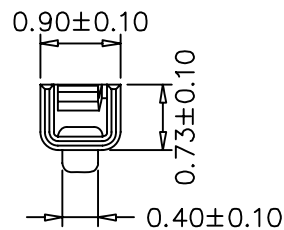
TOLERANCE: X.X ±0.30 X.XX ±0.25 X.XXX ±0.15 X' ±2' X.X' ±0.5'	DRAWN BY : 陈一鸣	DATE : 2014-02-23	PART NAME: 1.25超薄卧式贴片wafer
	CHECKED BY: 马跃	DATE : 2014-02-23	PART NO. HYC87-WFN-125
UNIT: mm [inch] SCALE:1:1 SIZE: A4	APPROVED BY: 邱敏	DATE : 2014-02-23	DRAW NO: HYC-2306062026
			SHEET NO. 1 OF 1



SEC: A-A

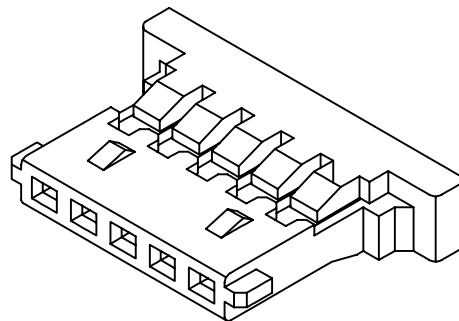
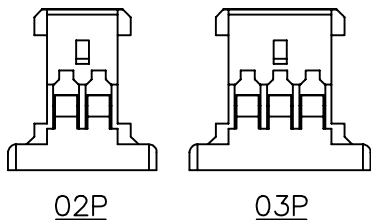


SEC: B-B



深圳市华宇创精密电子有限公司

TOLERANCE: X.X ±0.30 X.XX ±0.25 X.XXX ±0.15 X.' ±2' X.X' ±0.5'	DRAWN BY : 陈一鸣	DATE : 2014-02-23	PART NAME: 1.25PH 端子
	CHECKED BY: 马跃	DATE : 2014-02-23	PART NO. HVC182-T-125
UNIT: mm [inch] SCALE:1:1 SIZE: A4	APPROVED BY: 邱敏	DATE : 2014-02-23	MOLD NO.
			DRAW NO: HVC-2102241535
			SHEET NO. 1 OF 1

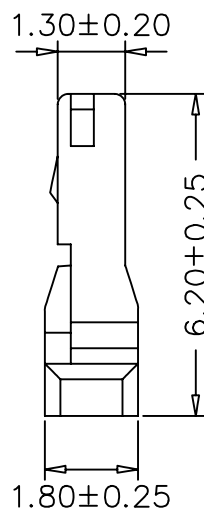
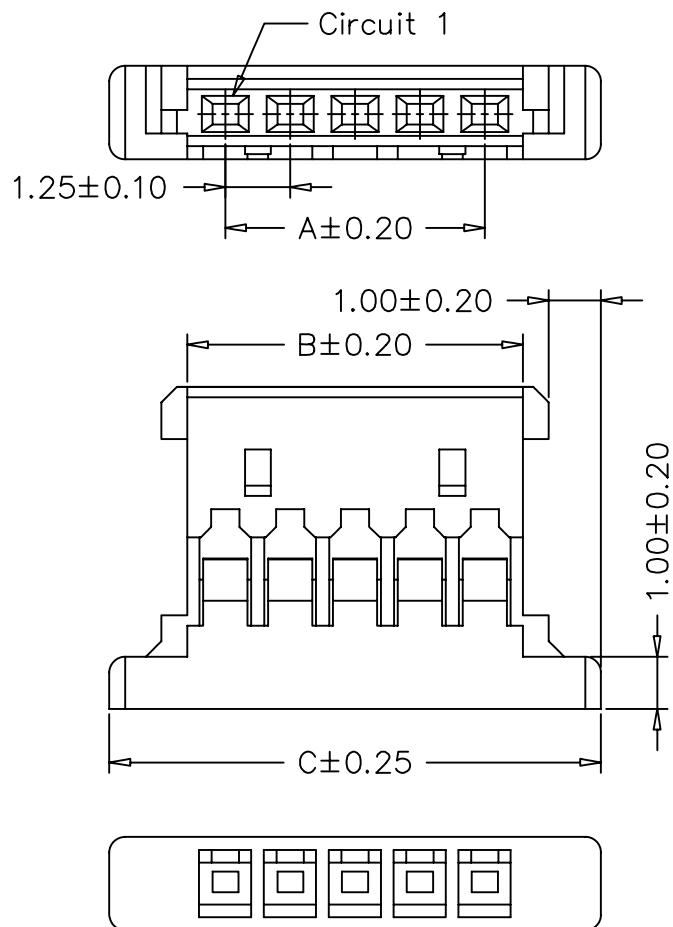


**SPECIFICATIONS**

Current Rating: 1A AC,DC  
 Voltage Rating: 125V AC,DC  
 Temperature Range: -25°C ~ +85°C  
 Contact Resistance: 20mΩ Max.  
 Insulation Resistance: 100MΩ Min.  
 Withstanding Voltage: 500V AC/minute  
 Material: Nylon 66,UL94V-0  
 Color: Natural(Beige)

**Ordering Information & Dimensions**

PART NO.	Dimensions		
	A	B	C
02P	1.25	2.72	5.72
03P	2.50	3.97	6.97
04P	3.75	5.22	8.22
05P	5.00	6.47	9.47
06P	6.25	7.72	10.72
07P	7.50	8.97	11.97
08P	8.75	10.22	13.22
09P	10.00	11.47	14.47
10P	11.25	12.72	15.72
11P	12.50	13.97	16.97
12P	13.75	15.22	18.22
14P	16.25	17.72	20.72
15P	17.50	18.97	21.97
16P	18.75	20.22	23.22
20P	23.75	25.22	28.22
30P	36.25	37.72	40.72



深圳市华宇创精密电子有限公司

TOLERANCE: X.X ±0.30 X.XX ±0.25 X.XXX ±0.15 X' ±2'    X.X' ±0.5'	DRAWN BY : 陈一鸣	DATE : 2014-02-23	PART NAME: 1.25PH 胶壳
	CHECKED BY: 马跃	DATE : 2014-02-23	PART NO. : HYC182-NY-125
UNIT: mm [inch] SCALE:1:1    SIZE: A4	APPROVED BY: 邱敏	DATE : 2014-02-23	MOLD NO. : /
			DRAW NO. : HYC-2102241541
			SHEET NO. : 1 OF 1